

**EL VALLE DE LOS RANCHOS WATER & SANITATION DISTRICT**

**RESOLUTION 2024-01-01**

**A RESOLUTION ADOPTING EQUIPMENT STANDARDS FOR CONNECTIONS TO  
SEWER AND WATER**

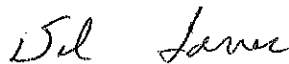
WHEREAS The District has determined it is in its best interest to identify and maintain equipment standards for customer connecting to its sewer and water system; and

WHEREAS these standards shall apply to all connections to the sewer and water system.

**NOW THEREFORE, BE IT RESOLVED** as follows:

1. Before connection and access to the District's sewer and/or water system, customers must comply with the equipment standards as set forth herein and attached hereto.
2. The attached list of equipment and diagram demonstrates the standard and connection requirements.
3. The District shall inspect all equipment and connections prior to authorizing connection to the system.
4. Failure to comply with these standards is sufficient justification to disallow connection until such standards are met.

PASSED AND ADOPTED this January 23, 2024



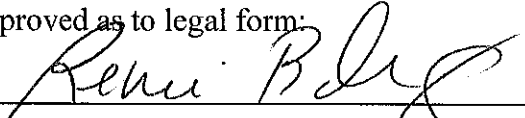
\_\_\_\_\_  
Del Torres, Chairman

ATTESTED:



\_\_\_\_\_  
Phillip Maestas, Secretary

Approved as to legal form:



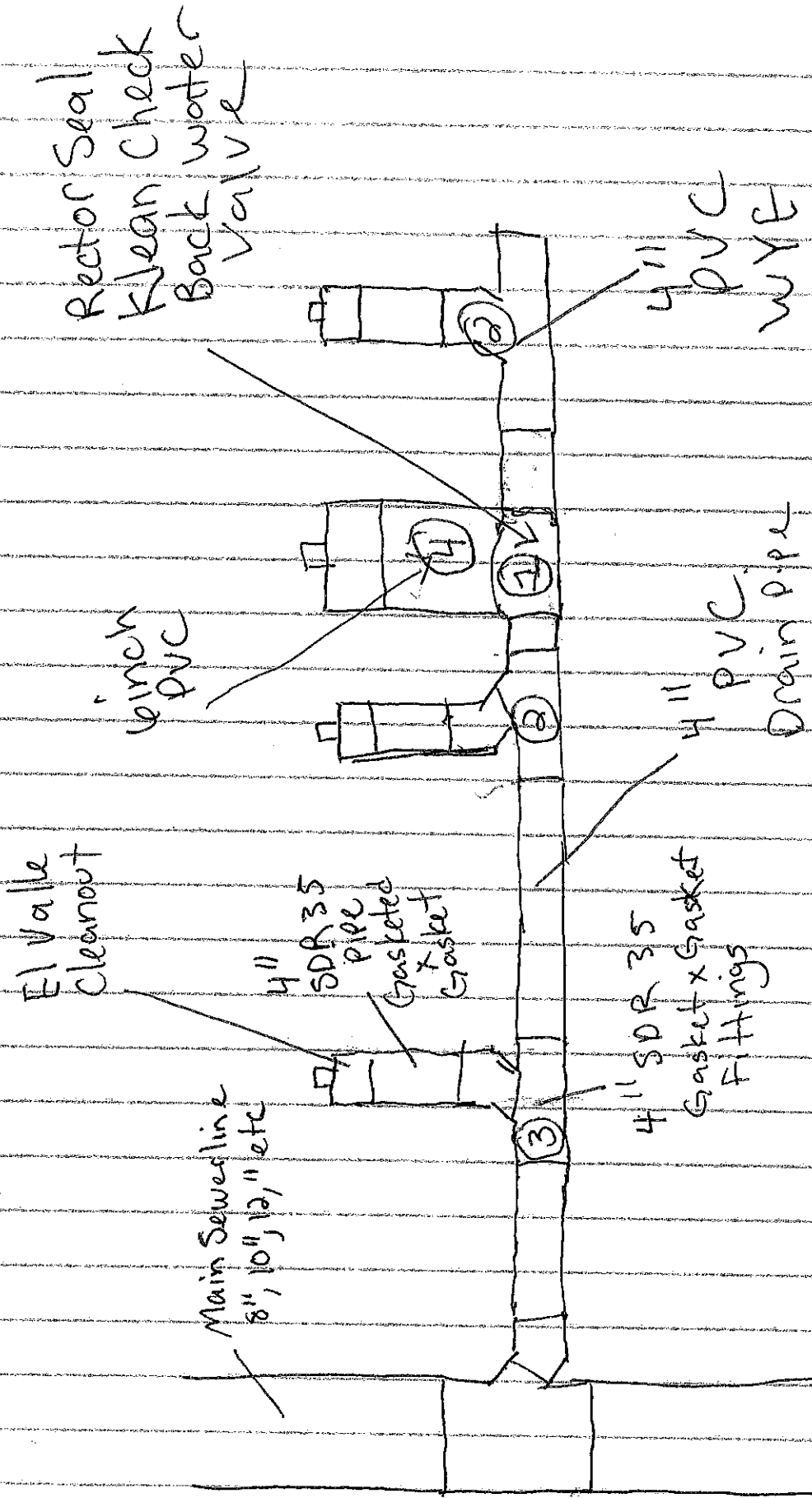
---

Renee Barela-Gutierrez, Board Attorney

## Sewer

1. 4' PVC backwater valve
2. 4" PCV cleanout both ends of backflow
3. 4" SDR gasket fittings El Valle side (clean out)
4. 6" PVC for backflow

# Sewer



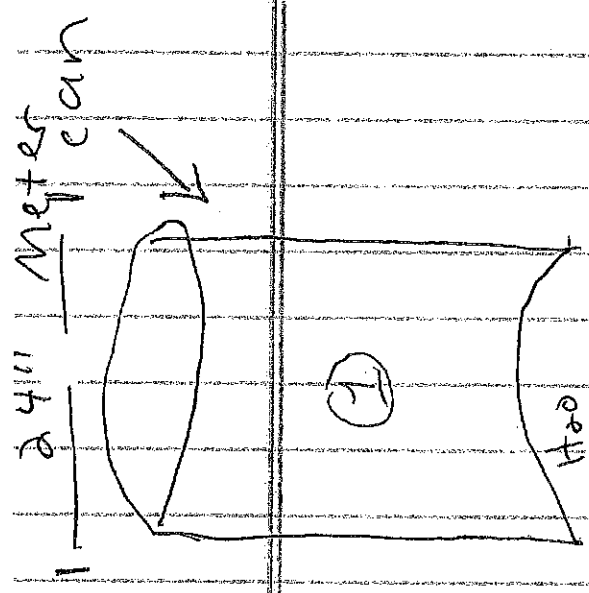
## Water

1. 24" meter can lid and ring
2. 6' soft copper type K into meter can and out of meter can
3. Mueller angle meter valves (comp) (brass)
4. Mueller compression couplings (brass)
5. Mueller compression x male corp stop (brass) big wing nut shut off
6. 3/4" or 1" Pex depending on tap if El Valle does not have meter can set up already
7. Full circle stainless x 12" tapping saddle
8. Foil back insulation for inside of meter can
9. 3/4" or 1" pipe insulation for service water line
10. 3/4" or 1" curbstop Mueller (brass)
11. 4" PVC customer side shut off

Water

Potable  
Pet Water Pipe

Main H<sub>2</sub>O  
Line



H<sub>2</sub>O  
water  
meter

Brass Angle  
Meter Valve  
Compression

4" PVC  
Lid + Cap

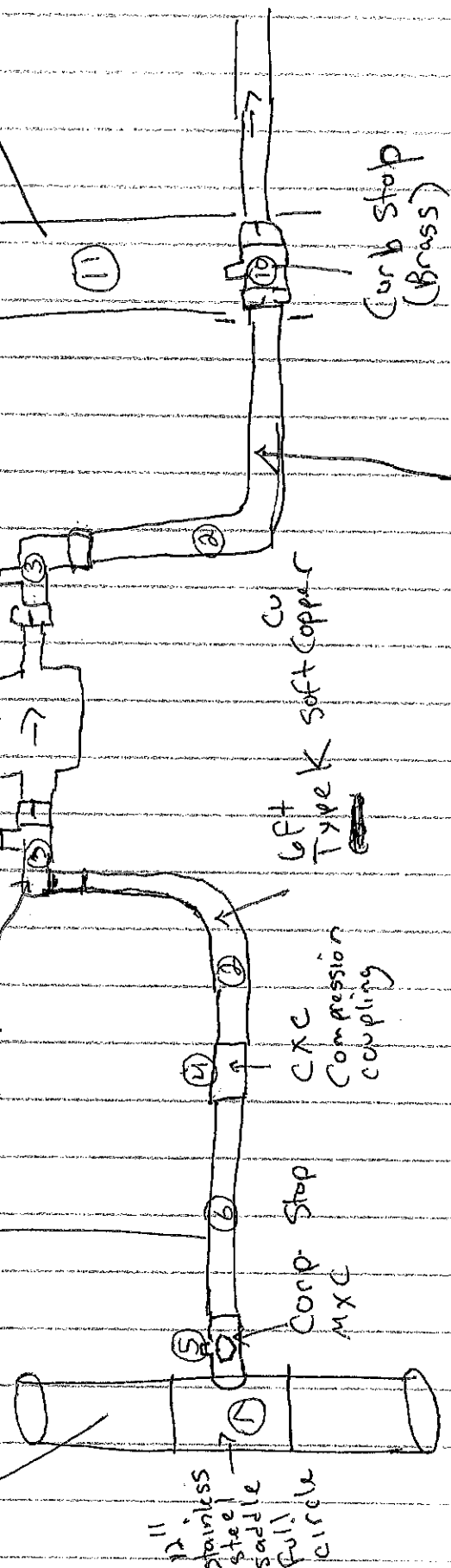
Curb stop  
(Brass)

6 FT Type K  
Soft Copper

6 FT Type K  
Soft Copper

CXC  
Compression  
coupling

Corp. Stop  
MXC



12" stainless  
steel  
saddle  
Full  
circle